

Quality Management Software
that **moulds** to your needs...



IsoMetrix Quality Management

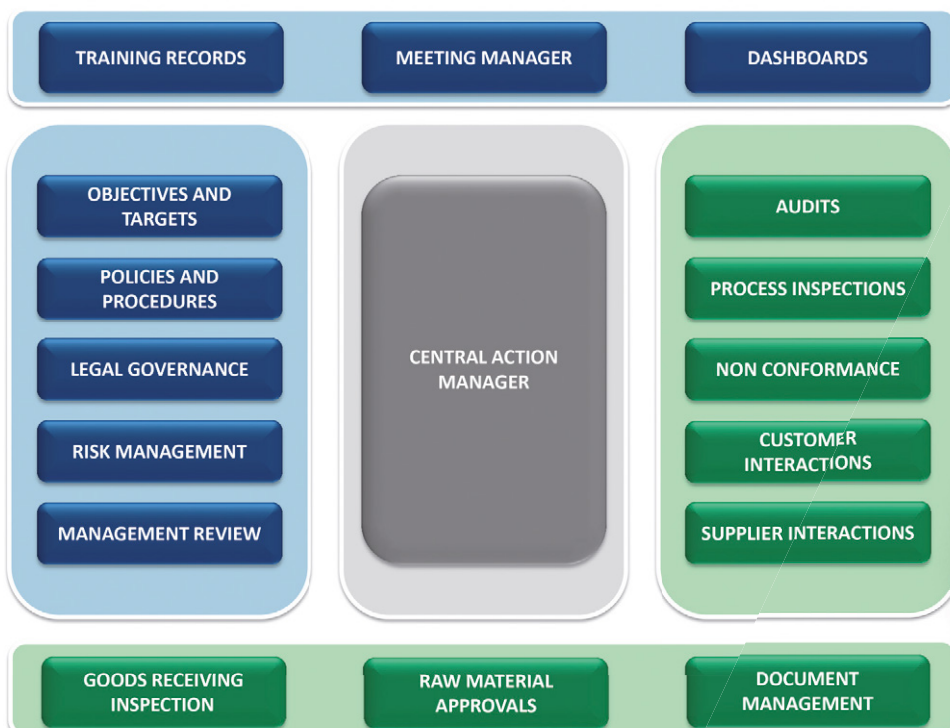
The global economy is becoming increasingly competitive. Customers demand ever-higher standards of service from existing and new product or service offerings. A clearly structured, systematic approach to improving the customer experience is crucial to any organisation if they are to remain competitive.

Continual improvement is arguably the most important feature of a good management system. Product or service improvement is critical for the retention of customers and expansion of market share.

IsoMetrix is the perfect tool for companies who have, or aspire to having, ISO 9001 accreditation. The product gives control and visibility over the full continual improvement life cycle.

The Benefits of the IsoMetrix Software Solution

- **Integrated web-based risk management solution** that can help you manage all your Quality processes as well as assist you in achieving ISO 9110 certification with relative ease.
- **Certifiable processes** required for Quality management can be developed, implemented and maintained by single and multi-site companies. It is ideal for large, medium and small organisations across all sectors and types of business.
- **PDCA + R cycle** design thereby adhering to the ISO international standards. This ensures compatibility and a high extent of integration.
- **Agile application framework** enables it to be customised to suit your specific requirements and objectives quickly, easily and cost effectively. Implementations are faster because the solution can be matched to your existing processes, reducing the need for change management.
- **Risk Assessment component** is built in and is easily configured to suit the quality requirements of any company.
- **ISO Standards** such as ISO 14000 (Environment), OHSAS 18000 (Safety) or ISO 31000 (Risk) can be incorporated in your Quality Management Solution.



Plan, do, check, act & review simplified

Central to the ISO 9001 International Standard for Quality Management System requirements is the PDCA + R cycle:

- **PLAN:** How you are going to achieve the desired outcome.
- **DO:** Do what you have planned to do - implement the processes.
- **CHECK:** Check what has been done - has it worked?
- **ACT:** Act on these findings to identify improvements.
- **REVIEW:** Demonstrate and track improvement.

IsoMetrix consolidates all these elements into a centralised, electronic system that can be tailored to your exact requirements, from the data input screens to the management dashboards.

Standard modules

- Policies and Procedures
- Legal Compliance
- Risk Assessments
- Non-conformances
- Audits and Inspections
- Meeting Manager
- Action Manager
- Stakeholder Management
- Monitoring

What can I get out of it?

IsoMetrix dashboards - Analytics powered by QlikView

IsoMetrix dashboards are powered by Qlikview. Qlikview is a leading Business Discovery software application. Its intuitive dashboards allow you to stop guessing and start knowing how to make faster, smart decisions.

- Uncover hidden trends and make discoveries that drive innovative decisions.
- Compare by year, region, category or other dimensions at the click of a button.
- Ask questions and pursue insights on your own or collaboratively.
- Search across all your data to get the big picture - get results that let you see new connections and relationships between data sets.

IsoMetrix custom solutions

For expert enhancements or specialised applications you don't have time to create yourself, speak to an IsoMetrix Business Consultant, who can design and build a custom web-based application for you - within your budget and timeframe.

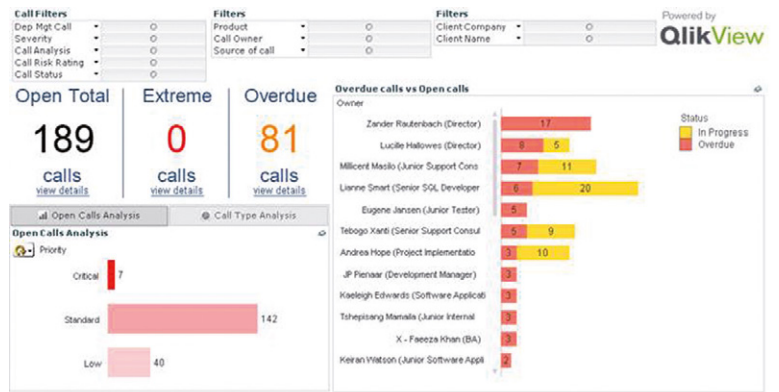
For further details please contact:

isometrix@sibasolutions.com.au

www.sibasolutions.com.au

Ph: +61 (0) 411 670 274

PO Box 241 Milsons Point NSW 2061



Other IsoMetrix solutions

A range of management system solutions are available including:

- Safety
- Health
- Environment
- Resettlement
- Sustainability
- Enterprise Risk Management

And many more...

